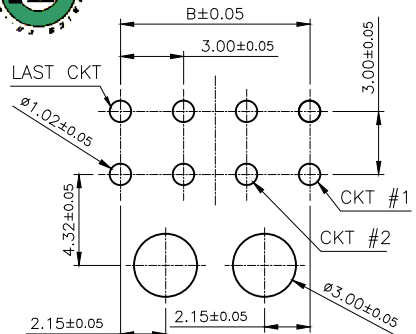
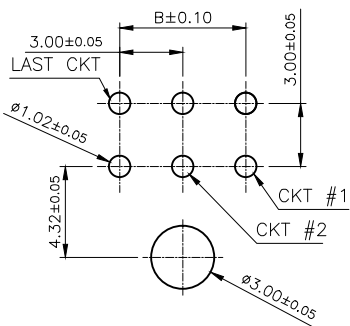




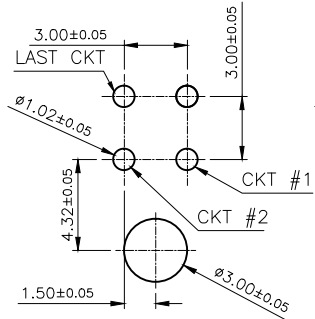
- NOTES:
- MATERIAL:
 - HOUSING: THERMOPLASTIC, HIGH TEMP., UL94V-0; COLOR:BLACK.
 - CONTACT: COPPER ALLOY
 - FINISH:
 - CONTACT:
 - 50u" MIN NICKEL UNDERPLATING OVERALL.
 - N: 100u" MIN MATTE TIN OVERALL.
 - C:15u" MIN SELECT GOLD IN CONTACT AREA;
 - 100u" MIN MATTE TIN ON SOLDER TAILS OVER;
 - REFLOW SOLDER CAPABLE TO 260°C PER ACES SPEC.
 - SPEC. PLS. REFER TO PS-57959-XXXX-XXX
 - PACKAGE PLS. REFER TO 52995-XXXX-XX-TRP
 - PART NUMBER
52995-XXX X X-XXX
NO OF CKT | | PLATING
0:TAPE & REEL | | N: MATTE TIN
| | C: 15U" GOLD PLATING



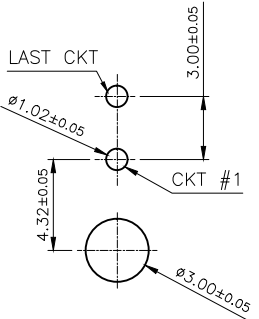
RECOMMENDED PCB LAYOUT
GENERAL TOLERANCE ±0.05
8~24 CIRCUIT HEADERS



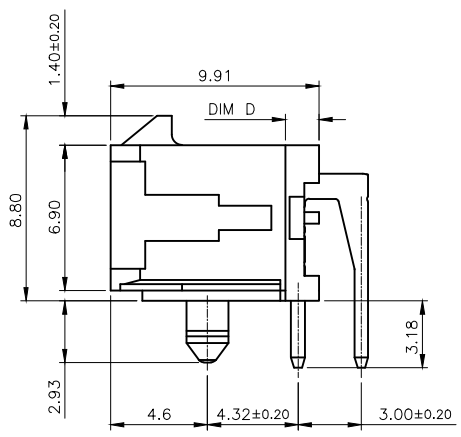
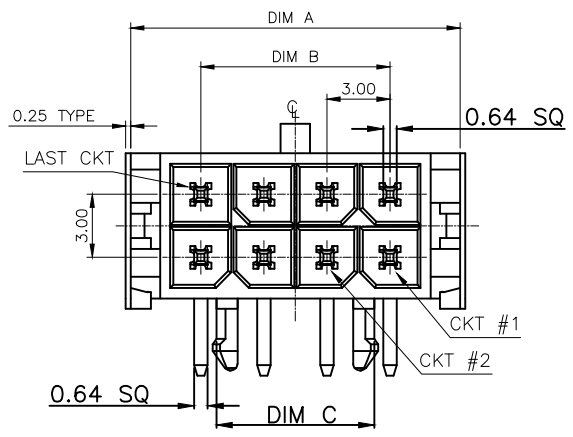
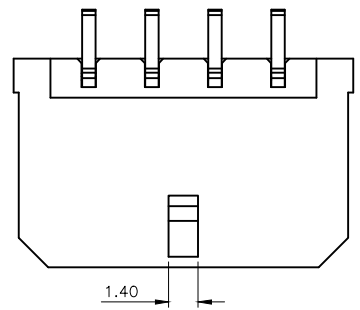
RECOMMENDED PCB LAYOUT
GENERAL TOLERANCE ±0.05
6 CIRCUIT HEADERS



RECOMMENDED PCB LAYOUT
GENERAL TOLERANCE ±0.05
4 CIRCUIT HEADERS

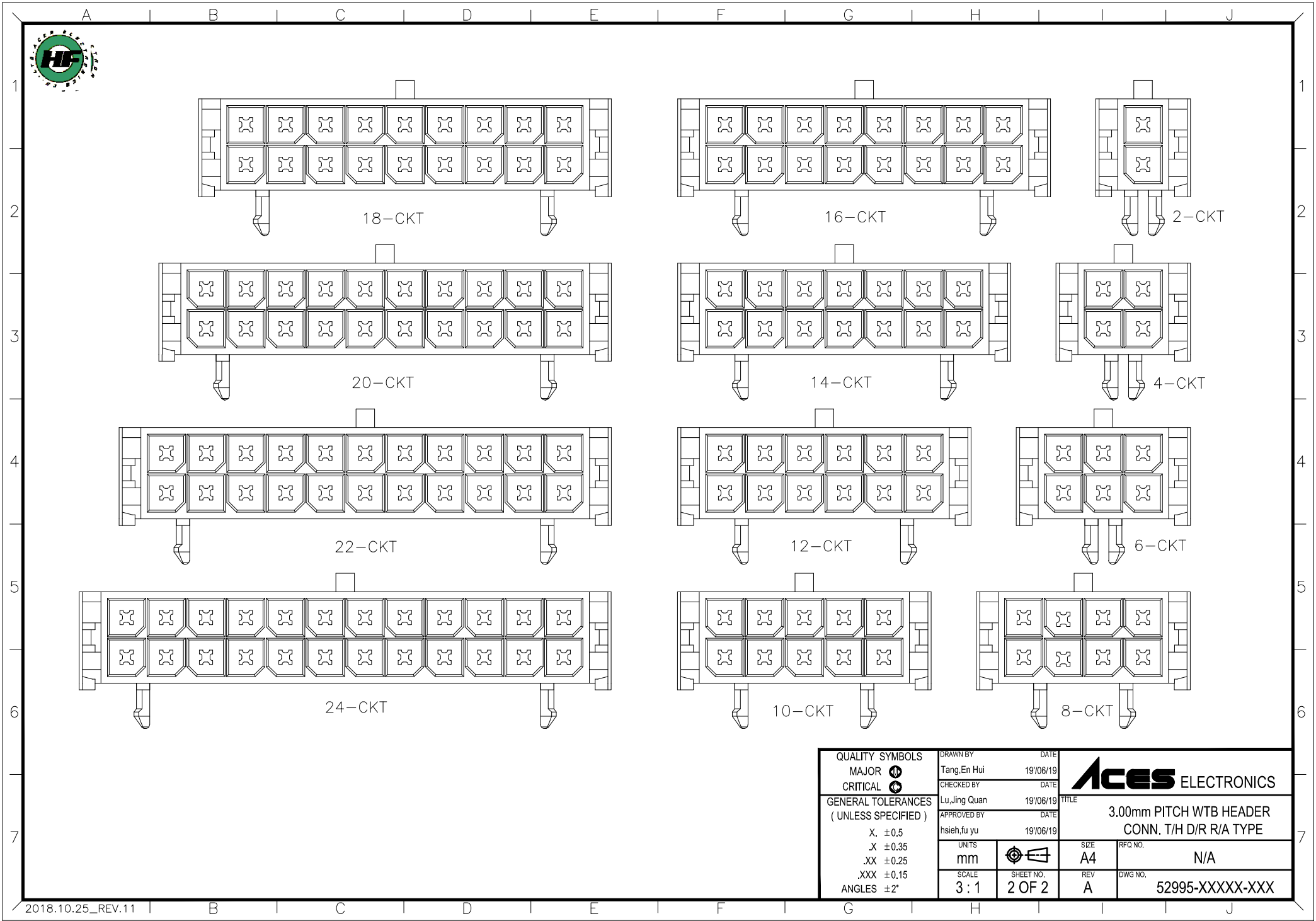


RECOMMENDED PCB LAYOUT
GENERAL TOLERANCE ±0.05
2 CIRCUIT HEADERS



CKT	DIM A	DIM B	DIM C	DIM D
4	9.65	3.00	NA	6.74
6	12.65	6.00	NA	
8	15.65	9.00	7.50	1.60
10	18.65	12.00	10.50	
12	21.65	15.00	13.50	
14	24.65	18.00	16.50	
16	27.65	21.00	19.50	
18	30.65	24.00	22.50	
20	33.65	27.00	25.50	
22	36.65	30.00	28.50	
24	39.65	33.00	31.50	

QUALITY SYMBOLS MAJOR CRITICAL GENERAL TOLERANCES (UNLESS SPECIFIED) X. ±0.5 .X ±0.35 .XX ±0.25 .XXX ±0.15 ANGLES ±2°	DRAWN BY Tang,En Hui CHECKED BY Lu,Jing Quan APPROVED BY hsieh,fu yu	DATE 19/06/19 DATE 19/06/19 DATE 19/06/19	
	TITLE 3.00mm PITCH WTB HEADER CONN. T/H D/R R/A TYPE		
UNITS mm SCALE 3:1		SHEET NO. 1 OF 2	RFG NO. N/A DWG NO. 52995-XXXX-XXX



QUALITY SYMBOLS MAJOR CRITICAL GENERAL TOLERANCES (UNLESS SPECIFIED) X. ±0.5 .X ±0.35 .XX ±0.25 .XXX ±0.15 ANGLES ±2°	DRAWN BY Tang,En Hui 19/06/19	DATE 19/06/19	
	CHECKED BY Lu,Jing Quan 19/06/19	DATE 19/06/19	
	UNITS mm		SIZE A4
	SCALE 3 : 1	SHEET NO. 2 OF 2	REV A
			RFG NO. N/A
			DWG NO. 52995-XXXXX-XXX